



SISTEMAZIONE DI TRATTO
DI VIA SAN LUIGI

PROGETTO DEFINITIVO

Comitente: REGIONE PIEMONTE
COMUNE DI SAN MAURIZIO CANAVESE
Piazza Mattei della Spina, 47
10132 TORINO - SERVIZIO LAVORI PUBBLICI
P.IVA. 01189290141

Il Progettista:
AG. A.M.A. ASSOCIATI
C.A. 10129 TORINO
S.M. 10129 TORINO
S.M. 10129 TORINO

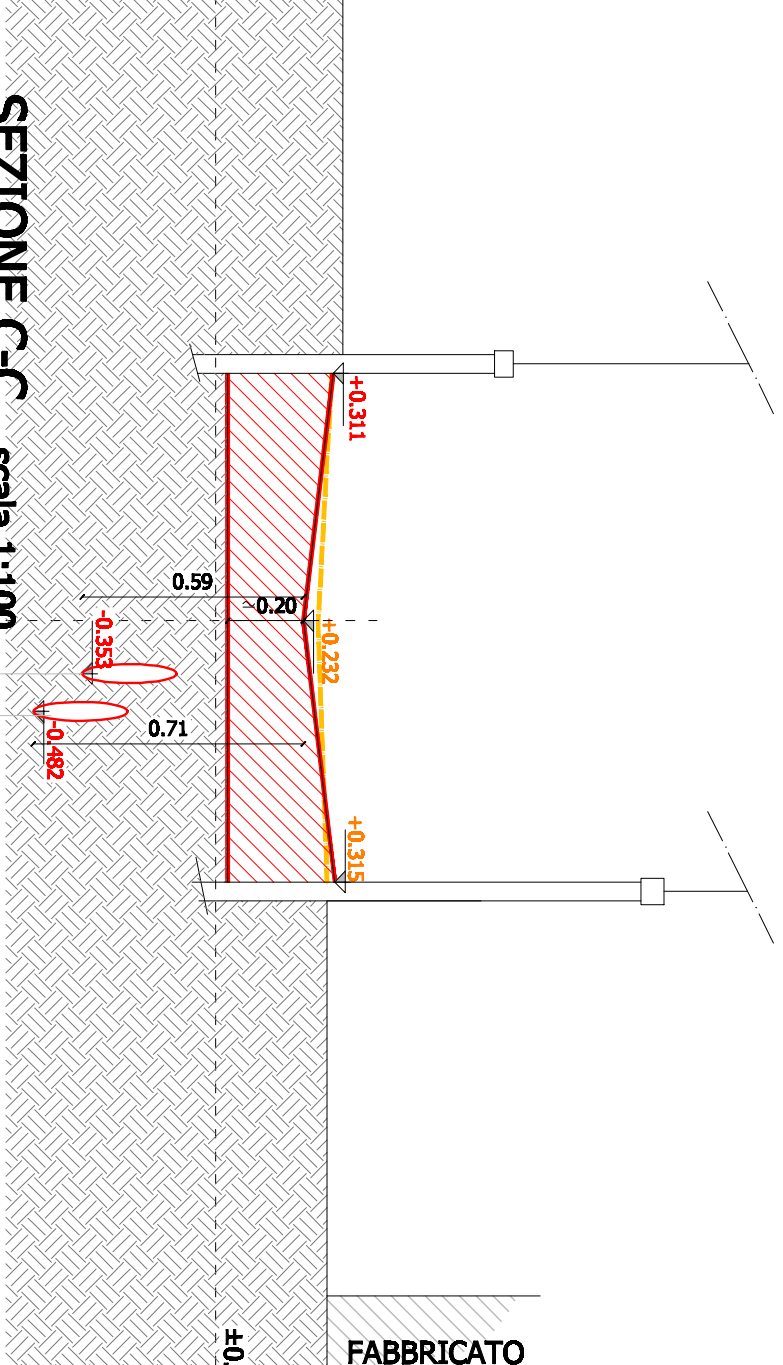
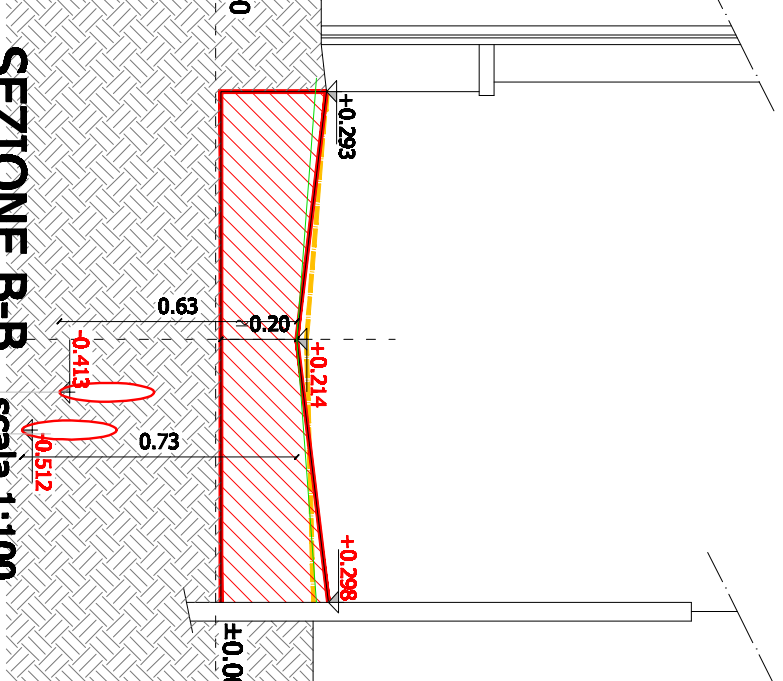
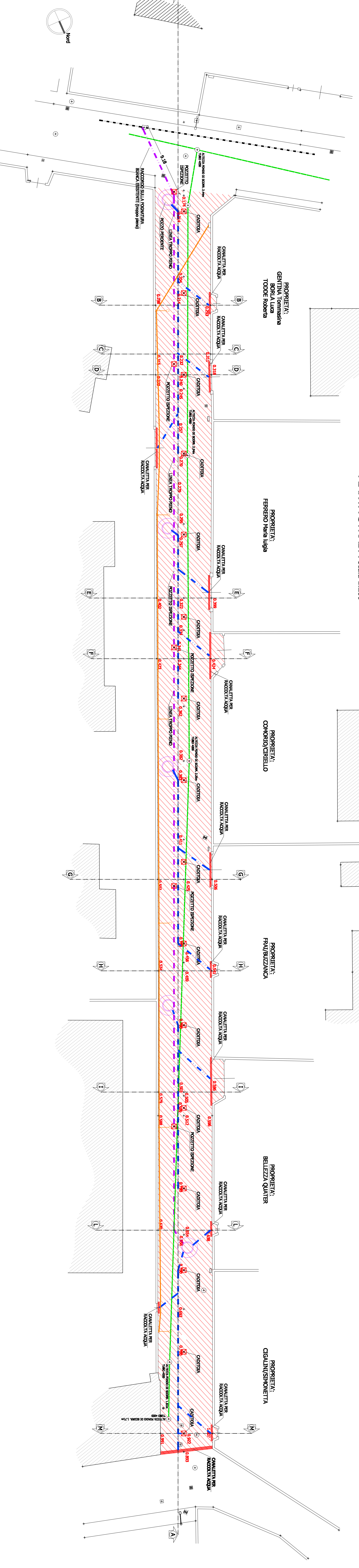
Collaborazione:

Impresa:

PIANTE, SEZIONI E PROFILI - IN PROGETTO

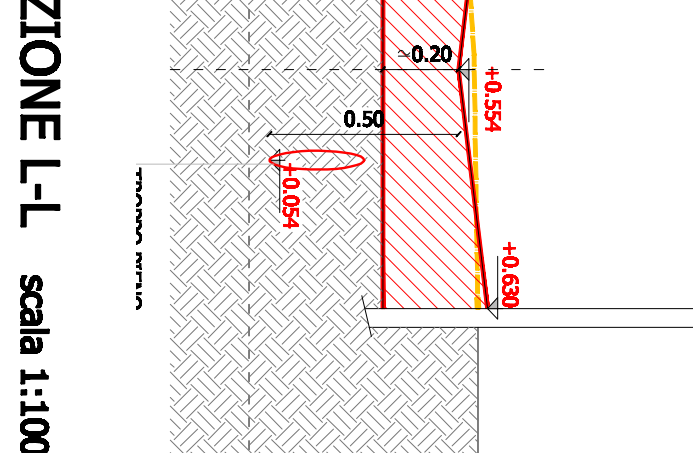
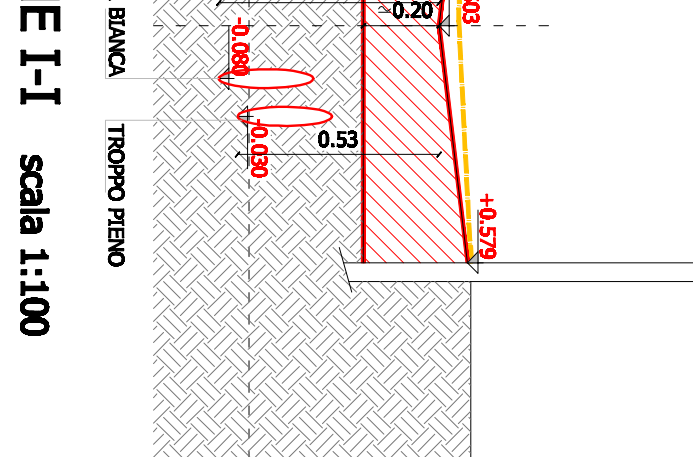
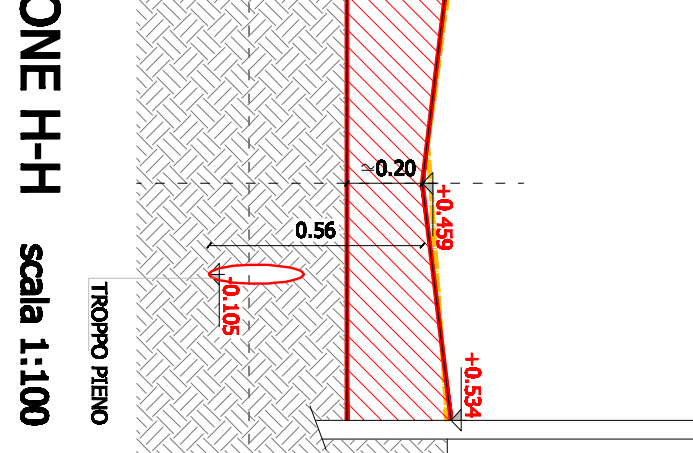
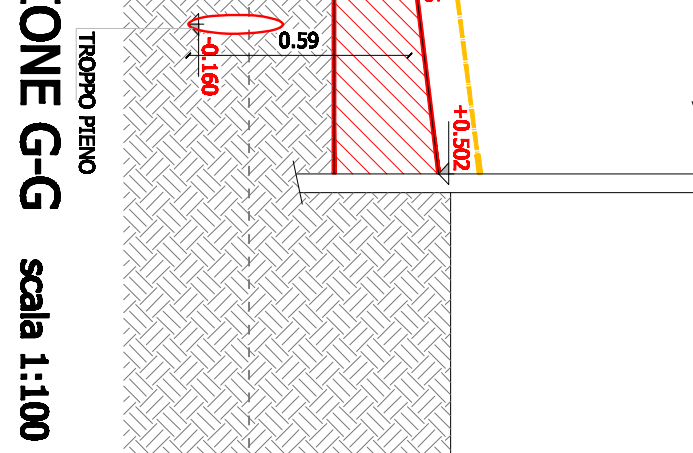
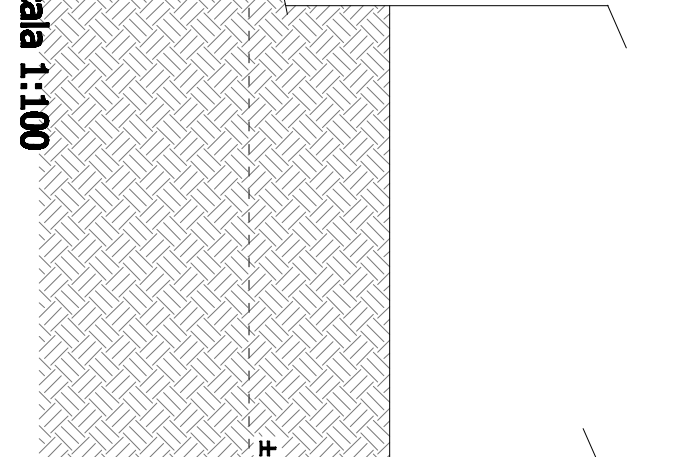
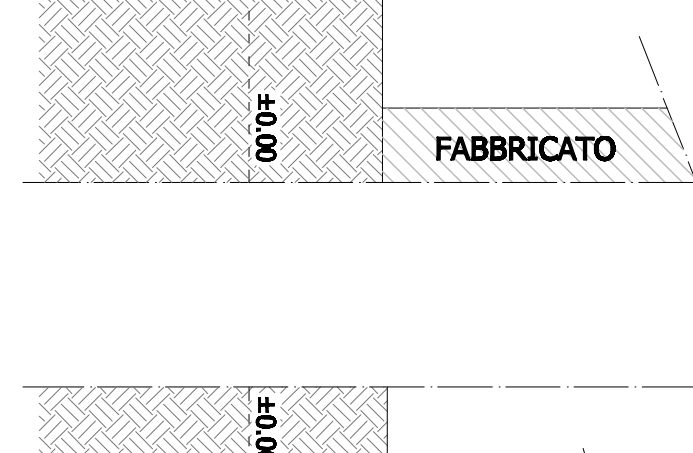
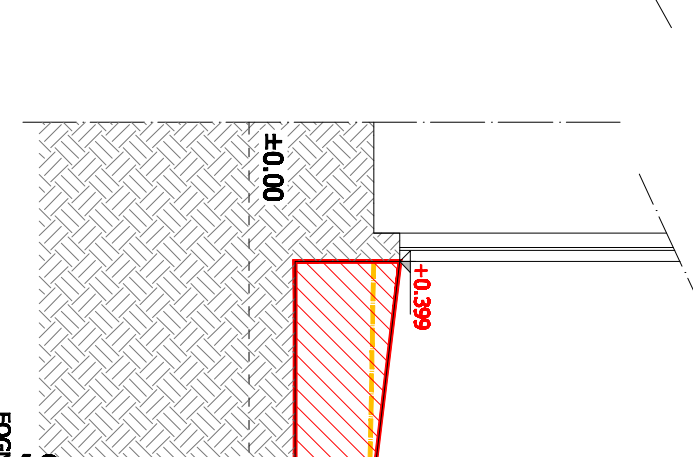
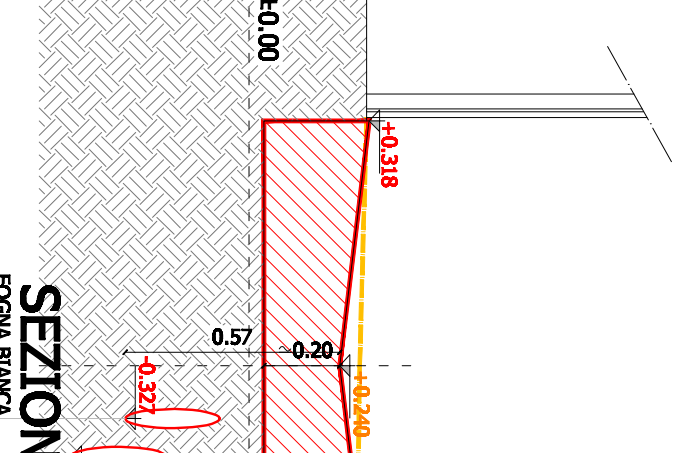
TAVOLA 4
SCALA 1:500
DATA: 10/05/2023
FAS: 10/05/2023

PIANTA STRADA scala 1:200

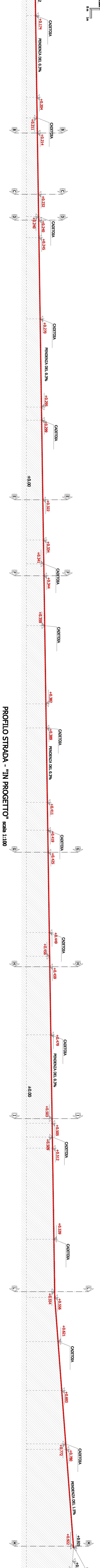


LEGENDA

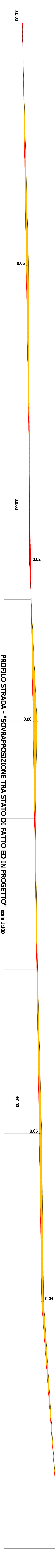
- OGGETTO IN PROGETTO
- TRATTO DI PAVIMENTAZIONE ESISTENTE
- TRATTO DI PAVIMENTAZIONE A SINISTRA IN PROGETTO
- CAVITÀ PER ACQUA PIAVIA
- PAVIMENTO ESISTENTE



SCALA PER LA RAPPRESENTAZIONE
GOMMA DELLE SEZIONI (rapporto 1:5)



PROFILO STRADA - "IN PROGETTO" scala 1:100



PROFILO STRADA - "SOVRAPPOSIZIONE TRA STATO DI FATTO ED IN PROGETTO" scala 1:100